

GE-374-Ex ATEX Air Flow Sensor (Flow Switch)

GE-374 Ex-proof type Air Flow Velocity sensor is designed for Duct or pipe air flow measuring, monitoring and controlling. It measure the flow velocity by Pitot tube with differential pressure sensor. Additionally, this pitot sensor is less sensitive to dust and dirt than all other anemometer principles.

The objection of the declaration is in conformity with the relevant EU harmonization legislation: ATEX directive 2014/34/EU, Machinery directive 2006/42/EC. The ATEX grade is Ex db IIC T6 Gb ($-20^{\circ}\text{C} \leq \text{Ta} + 80^{\circ}\text{C}$), Ex tb IIIC T85 $^{\circ}\text{C}$ Db ($-20^{\circ}\text{C} \leq \text{Ta} + 80^{\circ}\text{C}$) IP65; or Ex II 3GD Ex dc IIC T6 Gc ($-20^{\circ}\text{C} \leq \text{Ta} \leq +80^{\circ}\text{C}$) and Ex tc IIIC T85 $^{\circ}\text{C}$ Dc ($-20^{\circ}\text{C} \leq \text{Ta} \leq +80^{\circ}\text{C}$) IP65 for **gas** and **dust** explosion prevention.



Character:

- * No any moving parts
- * Long term measurement, accurate, reliable, sensitive
- * Temperature compensation with wide measuring range
- * Multiple outputs for choose 4-20mA, 0-10V, RS-485 or 1-4.5V
- * Max pressure: 20Kpa

Specification:

Velocity Flow Range: 0~5m/s~15m/s~20m/s~25m/s~30m/s~40m/s~70m/s...max200m/s

Accuracy: <(0.2m/s+3% measuring value) @1~20m/s, 25 C, 55%RH 1013hPa

Response Time: 2s

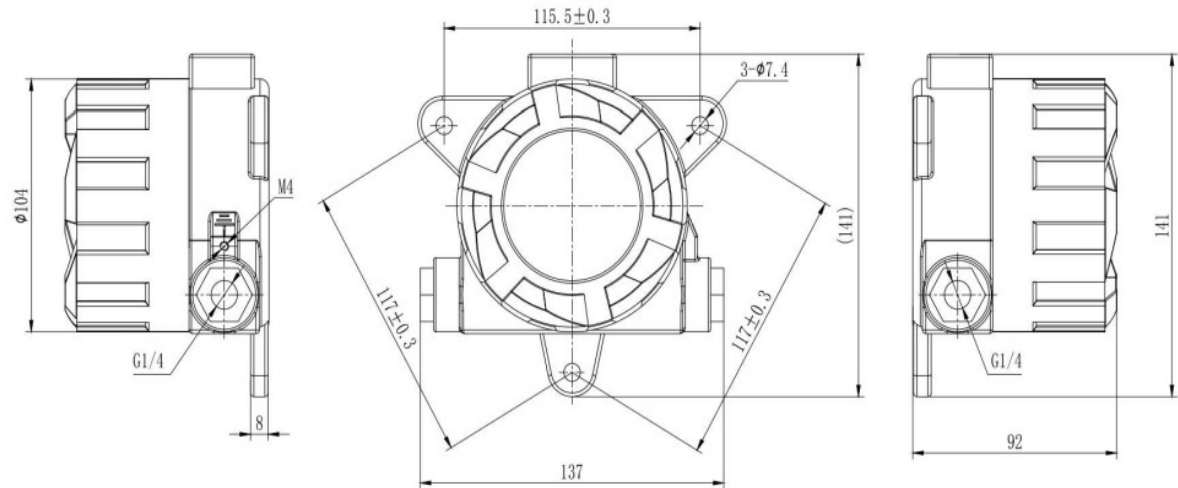
Temperature Compensation:10C~40C

Output: 1-4.5V, 4-20mA, 0-10V, RS-485, Modbus, Relay

Power: 18~30VAC/DC, 24VDC is standard

Housing:Fire-proof ABS

Protection:IP65, NEMA4

**How to order:**

1. Type number: GE-374-Ex
Split-type or an integrated type

2. Flow Velocity range:

0~ 1m/s ~ 2m/s ~ 3m/s ~ 4m/s ~ 5m/s ~10m/s.....15m/s.....20m/s.....30m/s
.....40m/s.....70mm/s.....
.....max 200m/s

3. Pipe size of air flow pipe or duct**4. Output:**

4.1 4-20mA,

4.2 0-10V,

4.3 RS-485

4.4 Relay (High limit and Low limit, the function as a flow switch)

5 Special demand

Display and output the flow rate (not flow speed), or others